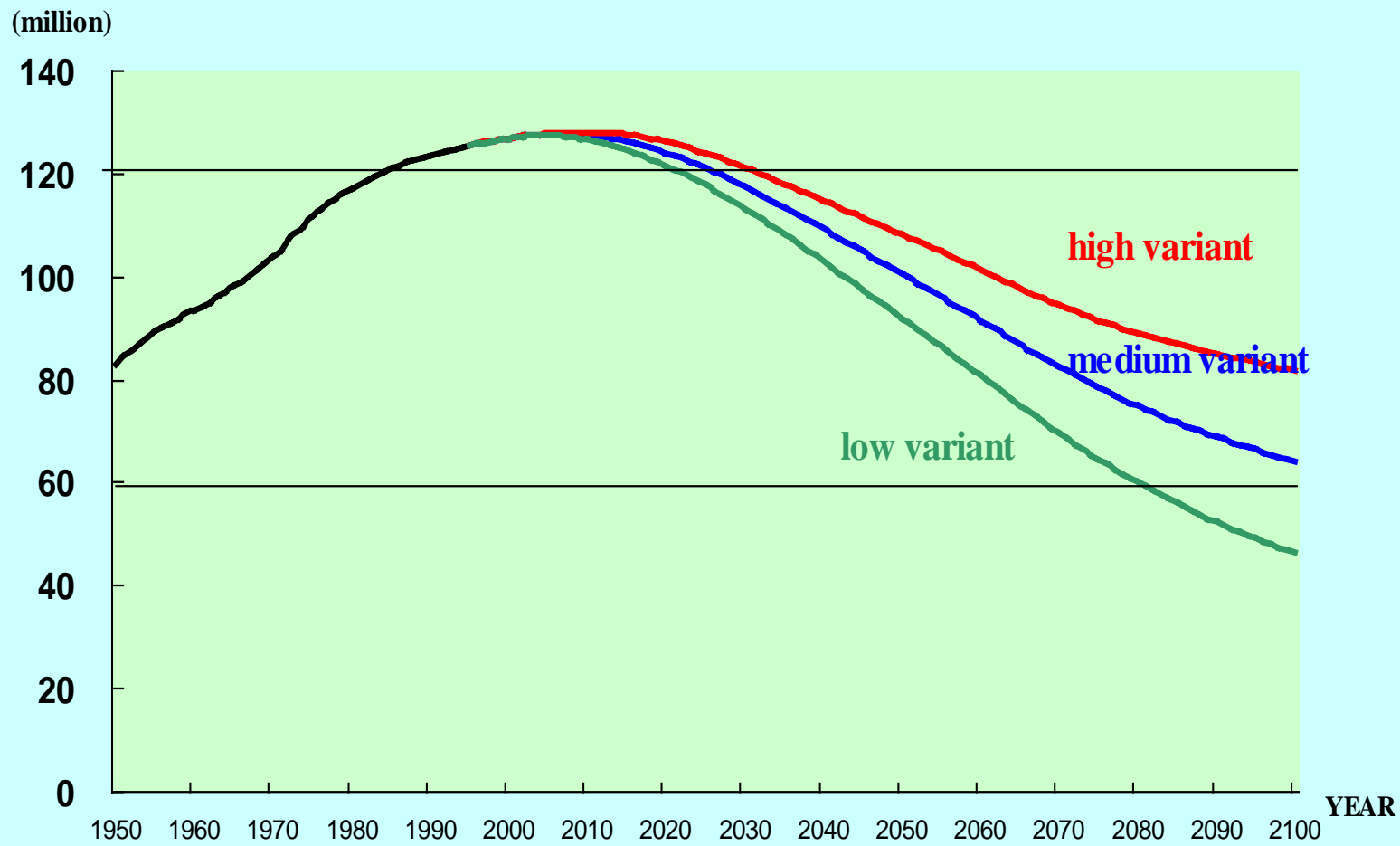
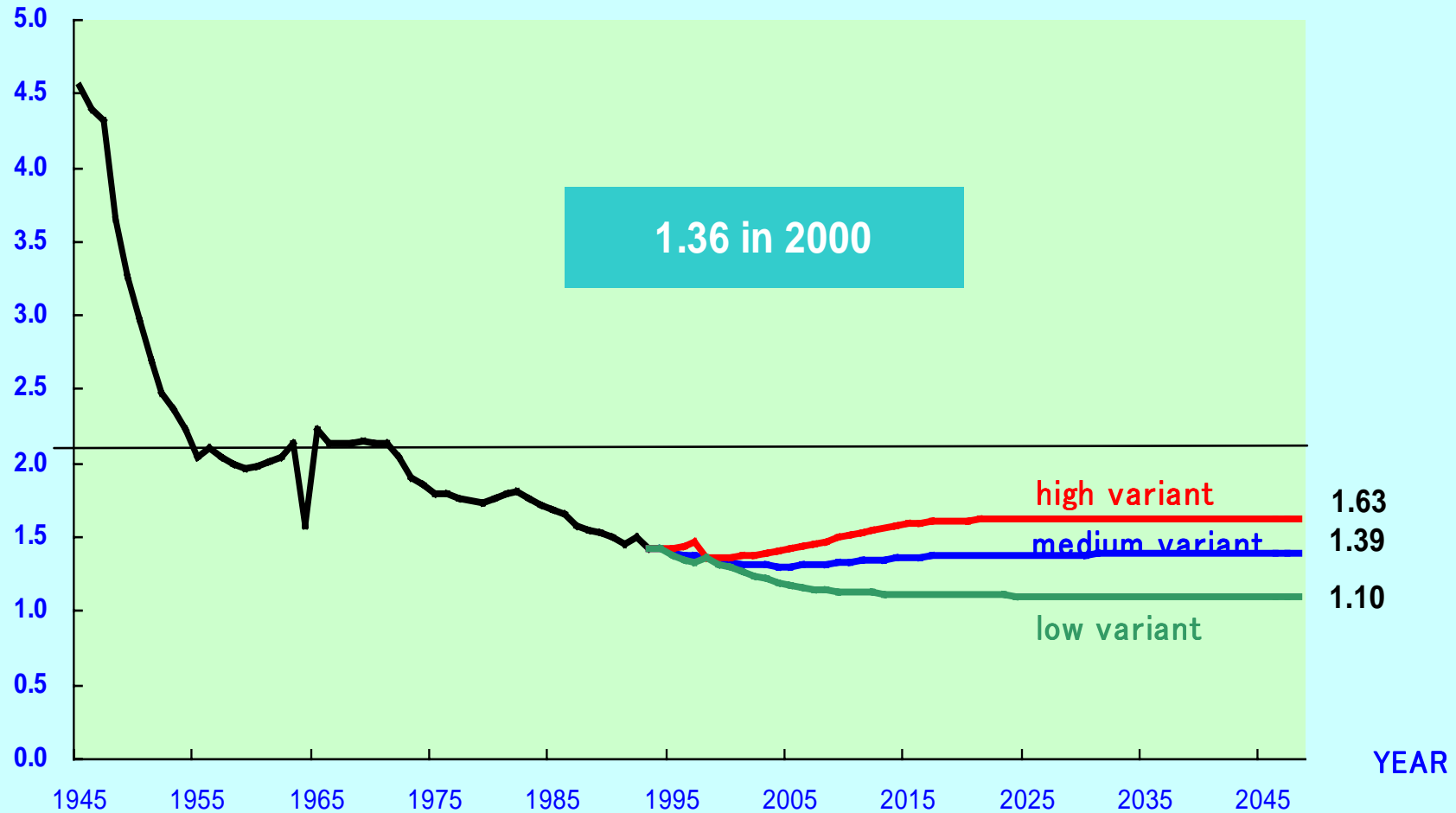


Figure 1 Actual and Projected Populations of Japan



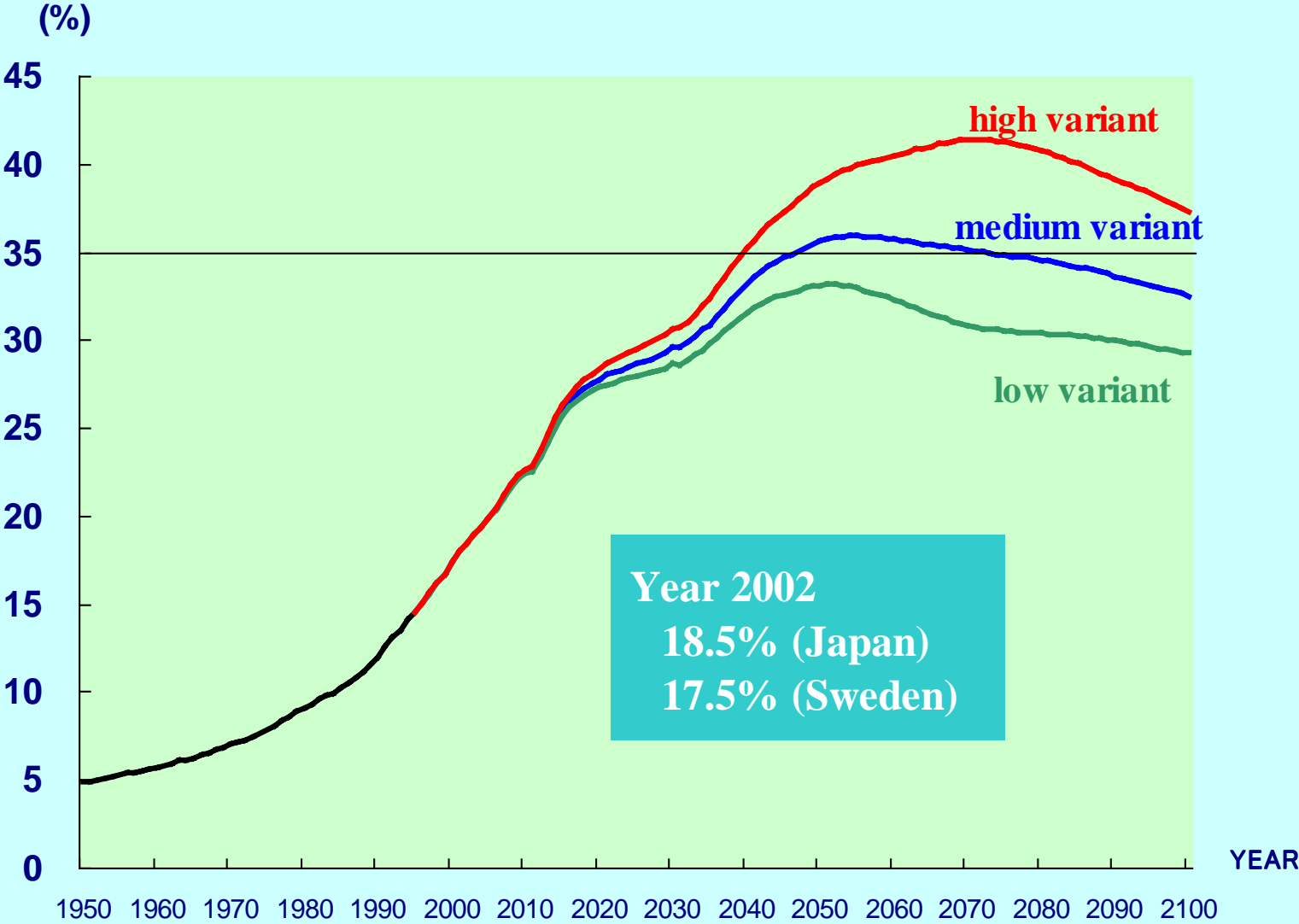
Source: National Institute of Population and Social Security Research (2002), *Population Projections for Japan: 2001-2100*

Figure 2 Trend in the Total Fertility Rate of Japan



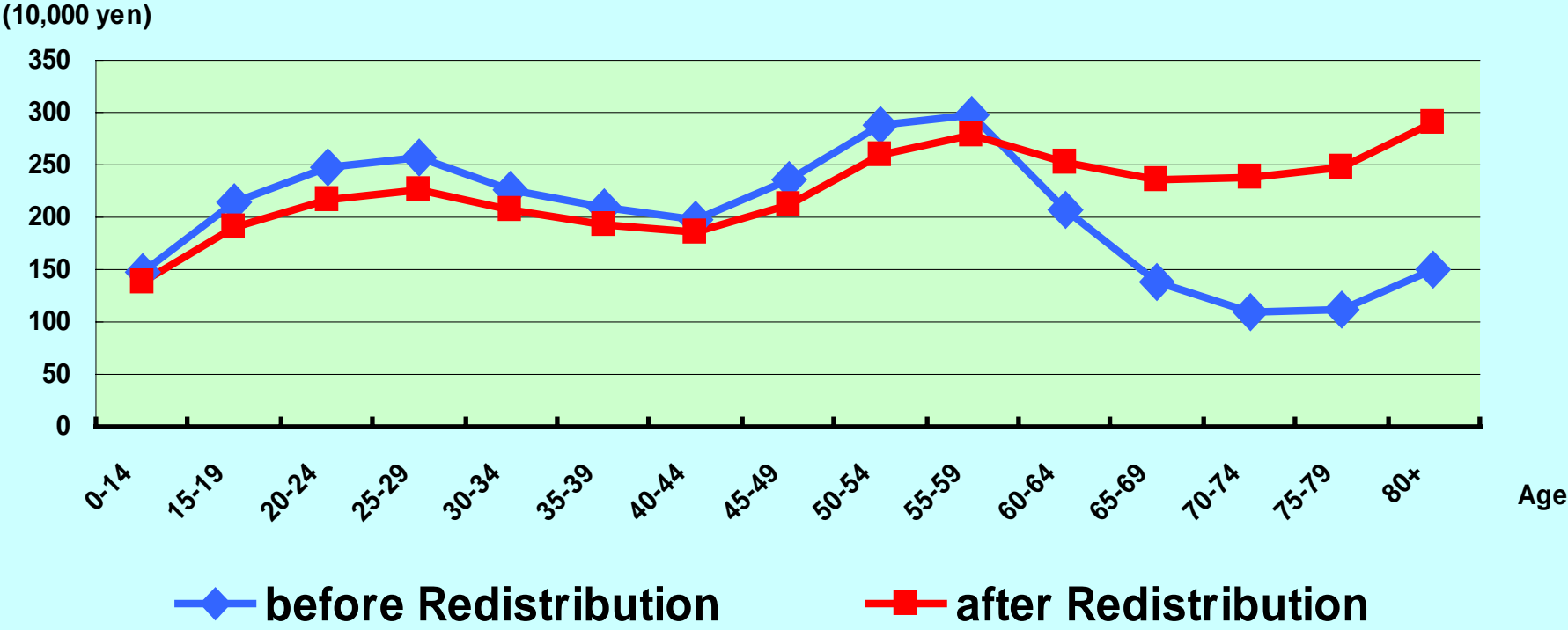
Source: National Institute of Population and Social Security Research (2002), *Population Projections for Japan: 2001-2100*

Figure 3 Proportion of the Elderly(+65) in Japan



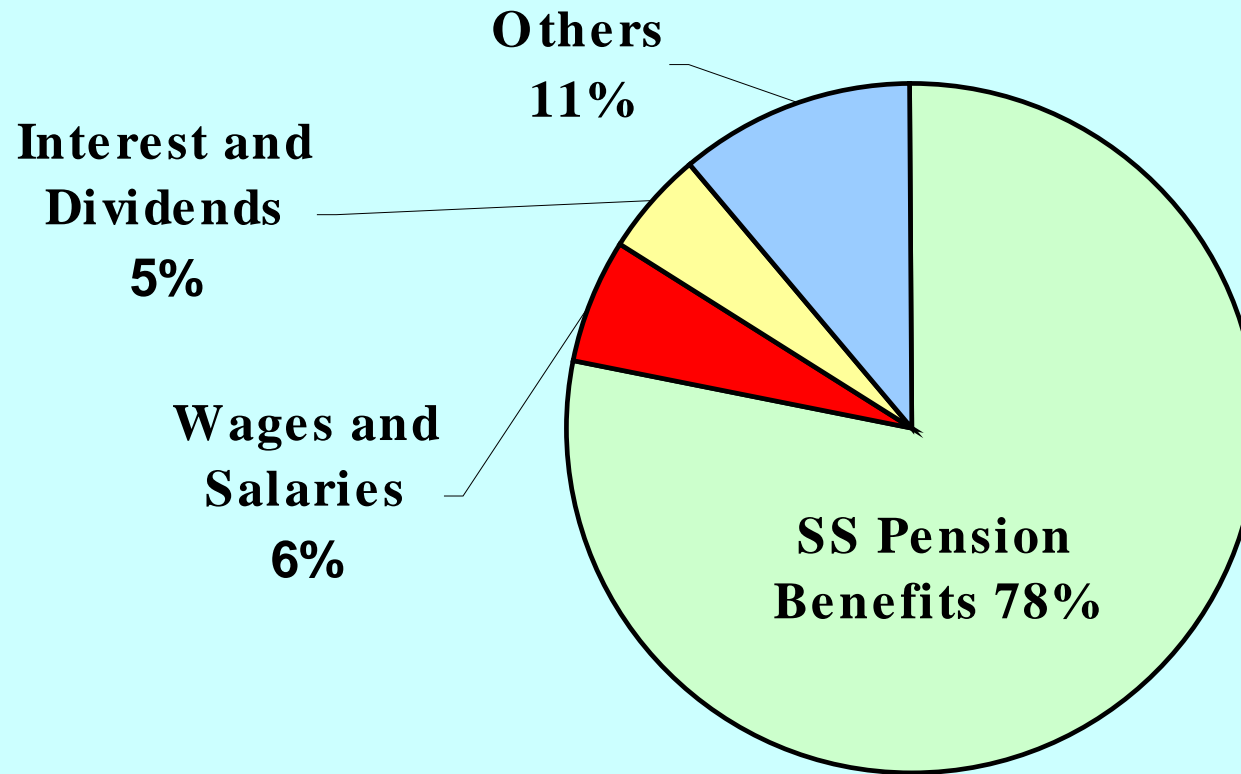
Source: National Institute of Population and Social Security Research (2002), Population Projections for Japan: 2001-2100

Figure 4 Per-capita Income by Age in Japan



Source: Ministry of Health and Welfare, *The 1996 Income Redistribution Survey*

Figure 5 SS pension benefits are the major source of retirement income



**Median income:
3.38 million yen**

Source: *The 1989 NSFIE* (elderly couples: median income group)

**Figure 6 Main Income Sources of Japan's
Central Government
(Fiscal Year 1999)**

